

KRM S05 Silo HO Cast Parts Kit

Instructions for Construction.

Produced By
Keiran Ryan



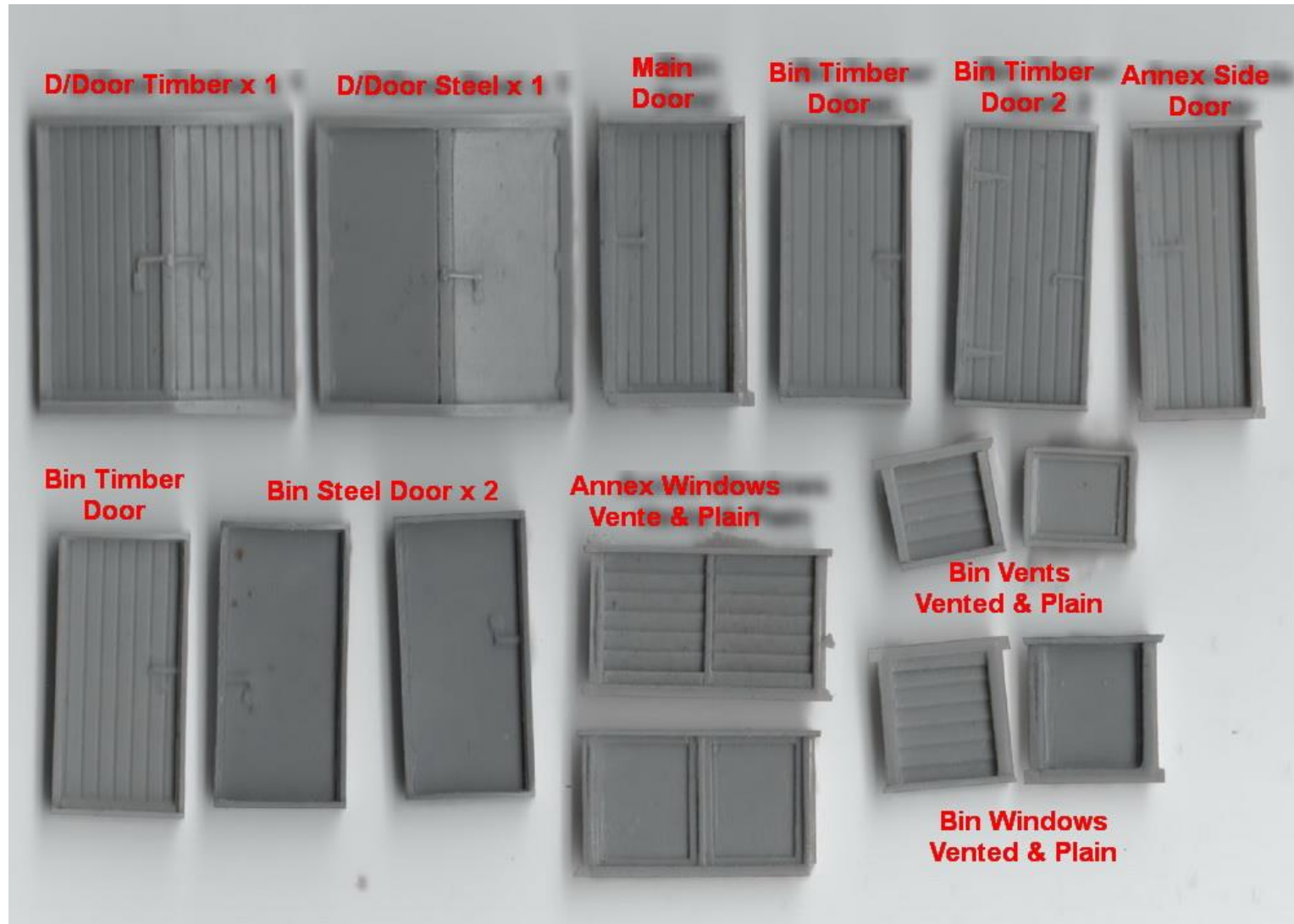
Introduction

- **This kit is a cast parts kit for any of the silos kits that bare produced by KRM.**
- **The kit contains polyurethane castings of Doors windows and vents for the silo substructure and bins.**
- **Be careful when handling the parts as the edges are very fragile and can break very easily.**
- **Photos are the best resource to use to identify the position and type of door, window or vent to be used.**
- **The following is a list of the parts included in the kit:**
 - **1 x double timber door.**
 - **1 x double steel door.**
 - **3 x single timber doors.**
 - **2 x single steel doors.**
 - **1 x main door**
 - **1 x annex door**
 - **12 x cupola window 6 x plain and 6 x vented.**
 - **4 x bin vents 2 x plain and 2 x vented.**

Hints and Tips

- **The doors and vents fit into the bins and therefore the bins will need to have holes cut into them so that the parts fit neatly, architraves can be added after the door or window is fitted.**
- **The parts need to be painted before being fitted to the model.**
- **Some parts will need to have the flash removed and trimmed slightly to ensure a nice neat fit.**
- **Parts can be distressed to simulate deteriorated or damaged parts, and weathered accordingly.**
- **Holes can be left in silo walls and the door or window sitting on the ground to indicate vandalism, but you must show a lot of detail when doing this as a frame may be required to be left in the hole on the bin wall.**
- **Use photos to get the correct look of the silo that you are modelling.**
- **When placing holes in the bin walls test fit the part into the hole and ones you are happy with the fit, mark the part and place it aside until it is ready to be used, this will prevent damage to the parts.**

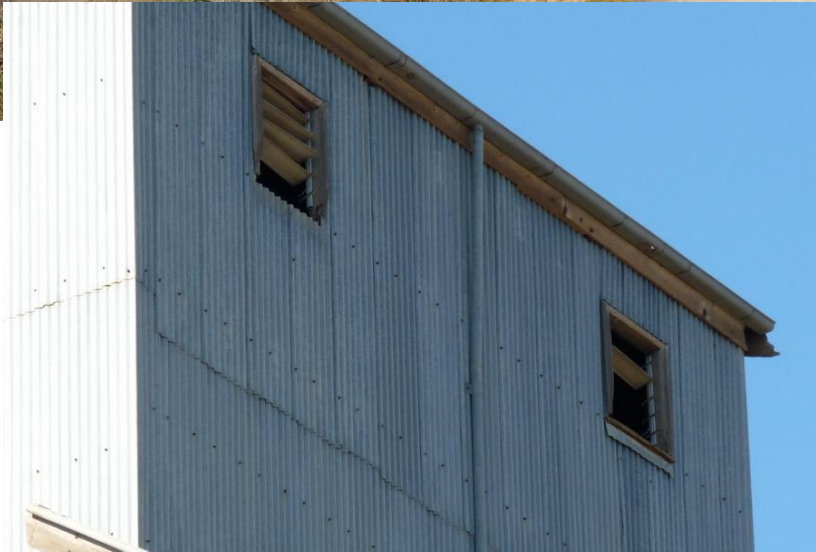
Part Description



Photos of some of these parts in there location.



Photos of some of these parts in there location.



I hope that this PDF helps, and
any feedback would be
appreciated.

It can be sent to

krmmodels@gmail.com

0409952874

Thanks Keiran Ryan